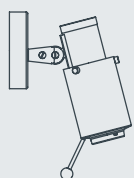


BINY™

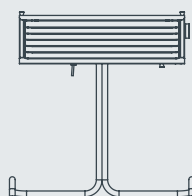
de Jacques Biny



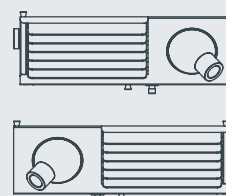
TABLE & WALL LAMPS



BINY SPOT
p. 50-56



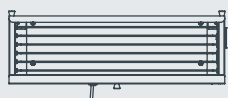
BINY TABLE
p. 57-61



BINY BEDSIDE LEFT & RIGHT
p. 62-65



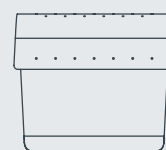
BINY BOX 1
p. 66



BINY BOX 2
p. 67



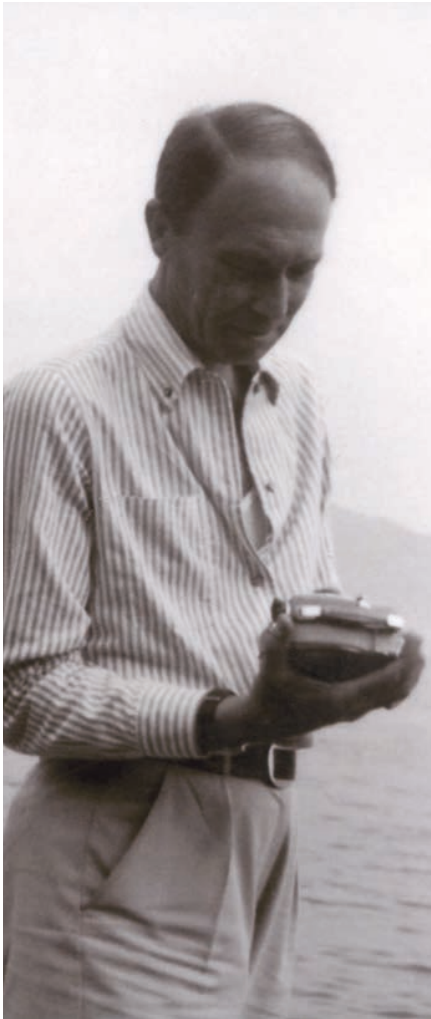
BINY BOX 3
p. 68-69



BINY CURVE
p. 70-71



TECHNICAL INFORMATIONS P. 406



Jacques Biny

Français • Jacques Biny en 1955, fonde à Paris son atelier d'éclairage moderne Luminalite.

Moderne, précurseur, ce Designer-Éditeur né en 1913 développe sur 30 ans près de 400 modèles. Jacques Biny, est un homme rigoureux, qui n'a cessé de travailler pour améliorer le

confort par la lumière dans l'habitat. La priorité donnée à la fonction, l'économie de moyens dans la recherche formelle suggèrent certains parallèles avec le courant artistique américain du Minimalisme apparu au milieu des années 60, ce qui explique l'engouement des collectionneurs autant aux États-Unis qu'en Europe.

Efficacité, simplicité, sobriété, élégance, refus de l'ostentatoire sont les dénominateurs communs du travail de Jacques Biny.

Ce sont pour ces qualités que nous avons choisi d'éditer les Box et le Spot de Jacques Biny.

BINY™

de Jacques Biny

English • In 1955, **Jacques Biny** opened Luminalite, his workshop for producing modern lighting. Modern, before its time, the Designer-Manufacturer who was born in 1913 developed over 400 models during a 30 year career. Jacques Biny's hallmark was rigour and he never stopped in his quest to improve how homes were lit. Functionality was primary, the lack of superfluity in the form reminiscent of the minimalist movement that was gaining currency in American art during the 1960's, which may go to explain why his work is as popular with American collectors as it is with Europeans.

Efficiency and simplicity, restraint, elegance and modesty are the common denominators in Jacques Biny's work.

They are the same qualities that inspired us to reproduce Jacques Biny's Box lights.

Deutsch • Jacques Biny, geboren 1913, gründet 1955 in Paris sein erstes Atelier "Luminalit" zur Herstellung moderner Leuchten. Dieser Designer und Verleger entwickelt als moderner Vorläufer rund 400 Modelle in 30 Jahren.

Jacques Biny ist ein gewissenhafter Mann, der unablässig arbeitet, um den Komfort des Lebensraumes durch die Beleuchtung zu verbessern. Die Priorität gilt der Funktion. Die Einsparung in

der Formensuche evoziert einige Parallelen zur amerikanischen Stilrichtung des Minimalismus, aufgekommen in der Mitte der 60er Jahre. Diese Tatsache erklärt die Begeisterung für Biny Modelle sowohl in Amerika als auch in Europa.

Effizienz, Schlichtheit, Zurückhaltung, Eleganz, betonte Unauffälligkeit sind die gemeinsamen Nenner der Werke Jacques Biny.

Es sind diese Vorzüge, die uns ermutigt haben, die "Box de Lumière" von Jacques Biny zu verlegen.

Italiano • Nel 1955 Jacques Biny fondò a Parigi il proprio laboratorio d'illuminazione moderna Luminalite.

Questo Progettista-Produttore moderno e precursore dei tempi, nato nel 1913, sviluppa nel corso di 30 anni quasi 400 modelli. Jacques Biny è un uomo rigoroso, che non ha mai smesso di lavorare per migliorare il comfort nell'abitazione attraverso l'illuminazione. La priorità data alla funzione dell'oggetto e l'economia di mezzi nella ricerca formale suggeriscono alcuni parallelismi con la corrente artistica americana del Minimalismo, comparsa nella metà degli anni Sessanta, il che ne spiega la popolarità tra i collezionisti sia negli Stati Uniti che in Europa.

Efficienza, semplicità, sobrietà, eleganza, rifiuto dell'ostentazione sono i denominatori comuni dell'opera di Jacques de Biny.

È per queste caratteristiche che abbiamo deciso di realizzare i Box de lumière di Jacques Biny.



Español • Jacques Biny fundó en 1955 su taller de iluminación moderna Luminalite en París.

Moderno y precursor, este diseñador y editor nacido en 1913 desarrolló a lo largo de 30 años alrededor de 400 modelos. Jacques Biny es un hombre riguroso que no ha dejado de trabajar para mejorar el confort mediante la iluminación del hábitat. La prioridad que se otorga a la función y la economía de medios en la investigación formal sugieren ciertos paralelismos con la corriente artística americana del Minimalismo, aparecida a mediados de los años sesenta, lo que explica el entusiasmo de los coleccionistas tanto en Estados Unidos como en Europa.

La eficiencia, sencillez, sobriedad, elegancia y el rechazo de la ostentación son los denominadores comunes de la obra de Jacques Biny.

Estas son las cualidades por las que hemos decidido editar los Box de luz de Jacques Biny.

| Without stick

BINY SPOT available with LED bulb (GU10 not supplied) or LED integrated
 BINY SPOT also available with switch on LED integrated version



BINY SPOT
BL-BL-NS



BINY SPOT
LED-BL-NK-NS with SWITCH



BINY SPOT
BL-GOL-NS



BINY SPOT
NK-BL-NS



BINY SPOT
LED-NK-NK-NS with SWITCH



BINY SPOT
NK-GOL-NS

| With stick



BINY SPOT
BL-BL



BINY SPOT
LED-BL-NK with SWITCH



BINY SPOT
BL-GOL



BINY SPOT
NK-BL



BINY SPOT
LED-NK-NK with SWITCH



BINY SPOT
NK-GOL



BINY SPOT™



Left page
BINY SPOT
BL-NK

Right page
BINY SPOT
BL-GOL



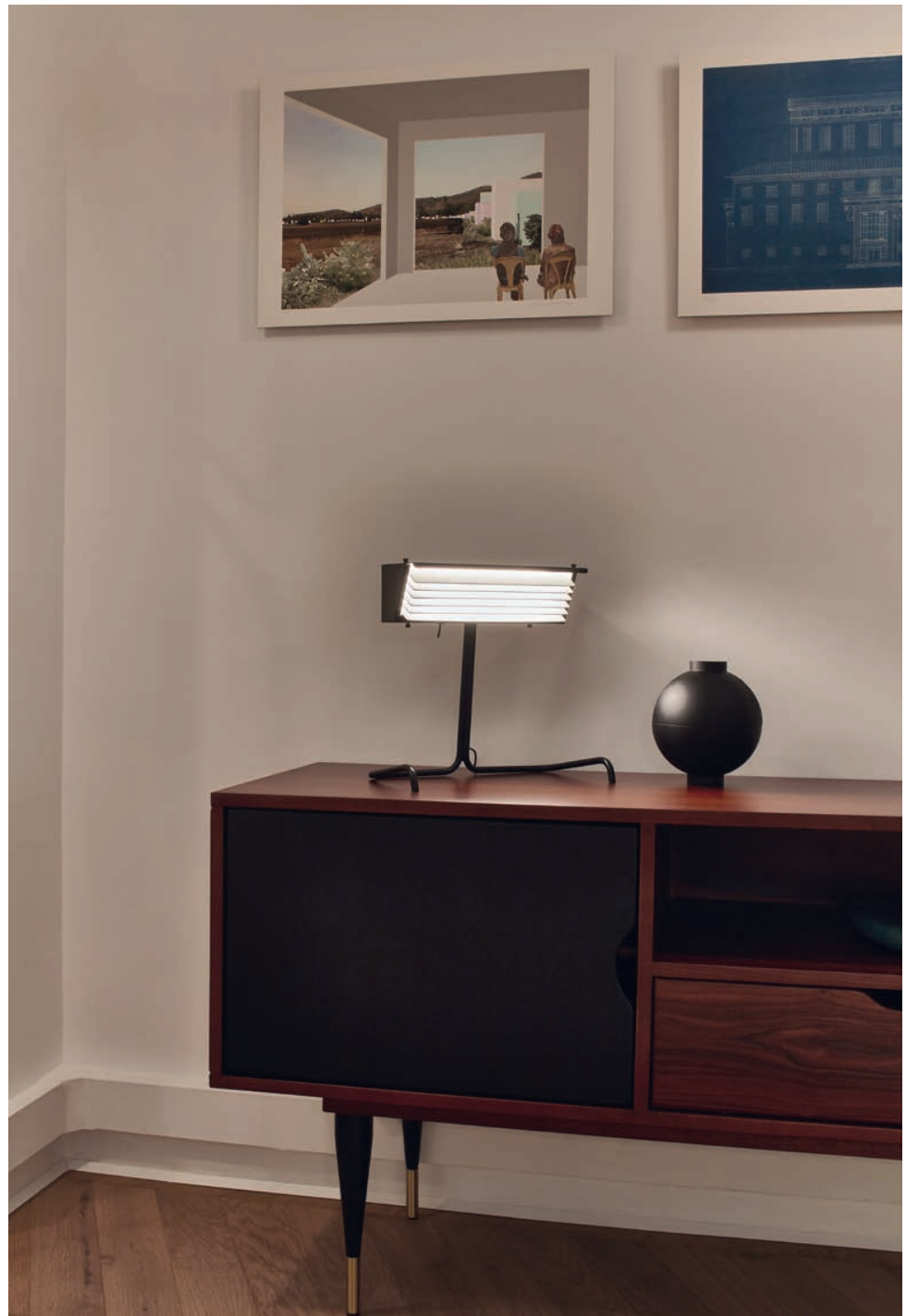
Left page
BINY SPOT BL-NK

Right page
3 x BINY SPOT NK-NK
+ CHAISE SURPIL





BINY TABLE™



Left page
BINY SPOT BL-GOLD

Right page
BINY TABLE SW BL-WH





Left page
BINY TABLE SW BL-BL

Right page above
2 x BINY TABLE SW BL-BL

Right page below
BINY TABLE SW BL-WH





Left page: BINY TABLE SW WH-BL-WH | Right page: BINY TABLE SW BL-WH



BINY BEDSIDE™



Left page: BINY BEDSIDE BL-WH LEFT | Right page: BINY BEDSIDE BL-WH RIGHT





Left page
BINY BEDSIDE
BL-WH LEFT

Right page
BINY BEDSIDE
BL-WH RIGHT



BINY BOX™





Left page
BINY BOX 1 BL-WH

Right page
BOX 2 SW BL-BL
+ CHAISE SURPIL



Left page
BINY BOX 3
SW BL-BL

Right page
BINY BOX 3
SW WH-WH

