

SEATING

SL58

Léon Stynen





SEATING

SL58





SL58 is a re-edition of a chair created in 1958 by Belgian modernist architect, Léon Stynen. A design beautifully reduced to pure simplicity and continuity, the SL 58 is a timeless classic. The shell is made of moulded beech plywood in natural or Santos Rosewood stain, in lacquer finish or upholstered in fabric or leather. The base is available in metal and lacquer finishes in 3 seating heights: dining, lounge and barstool. Also available with swivel 5-star base on castors.

SL58 is een heruitgave van de enige stoel die de Belgische modernistische architect Léon Stynen in 1958 heeft ontworpen. Het ontwerp is tijdloos. De zitkuip is in beuken multiplex, naturel of in palissanderkleur gebeitst, gelakt of bekleed in stof of leder. Het onderstel in chroom, champagnekleurig of gelakt is beschikbaar in 3 versies op poten: als dining, lounge en barkruk. Ook verkrijgbaar als bureaustoel met vijfsteronderstel.

SL58 est la ré-édition d'une chaise développée en 1958 par l'architecte belge moderniste Léon Stynen. Avec ses lignes claires et son profil épuré cette chaise est intemporelle. La coque est réalisée en multiplex de hêtre, naturel ou teinté en couleur palissandre, laqué ou revêtu en tissu ou en cuir. Le piètement est en acier chromé, finition champagne ou laqué et disponible à 3 hauteurs (diner, lounge, bar) et à 5 branches sur roulettes.

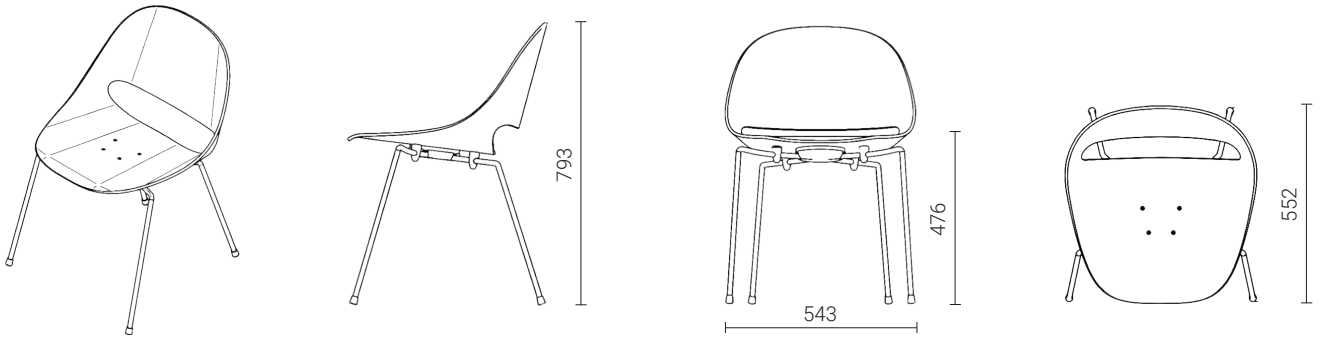
SEATING

SL58

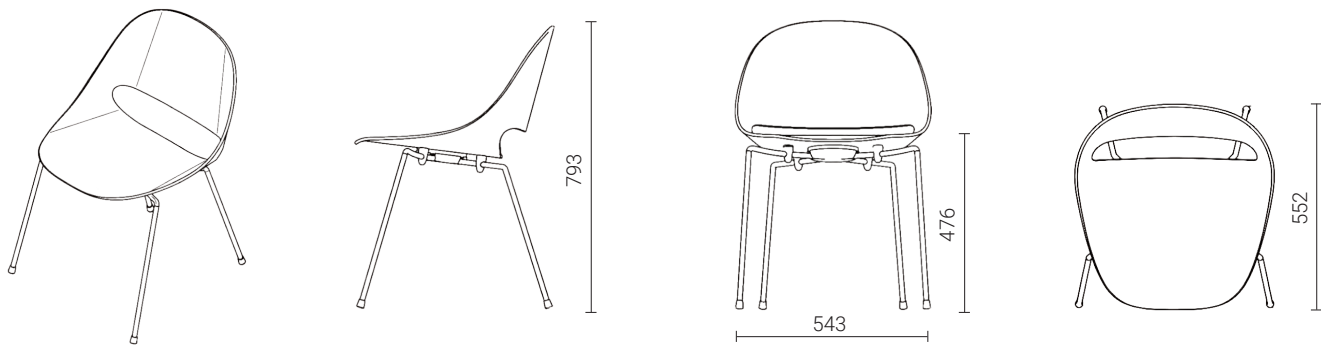


TECHNICAL SHEET

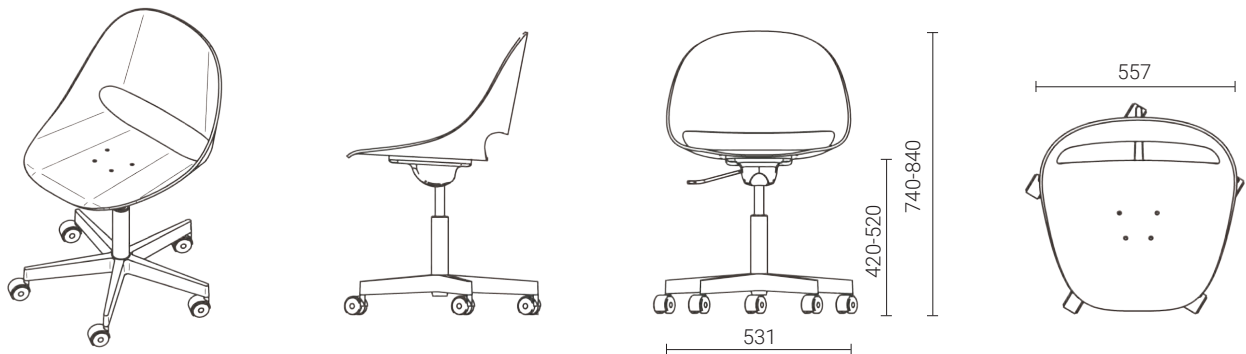
WOOD SHELL CHAIR



UPHOLSTERED CHAIR



OFFICE CHAIR



SEATING

SL58

COLORS & MATERIALS

SHELL

BEECH PLYWOOD



Rosewood Stain



Natural

LEGS/BASES

METALLIC



Chrome

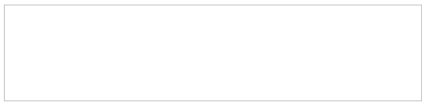


Champagne

LACQUER



Black



White



Red



Yellow



Light Grey

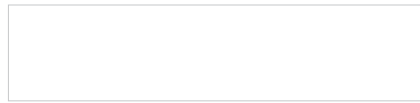


Dark Grey

POWDER COAT



Black



White



Red

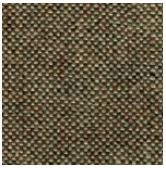


Yellow

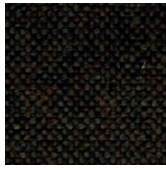
COLORS & MATERIALS

UPHOLSTERY

DUFFY



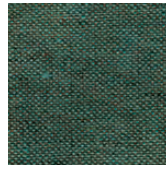
Oak



Coffee



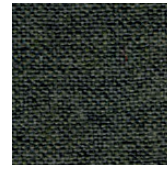
Tobacco



Daydream



Ink

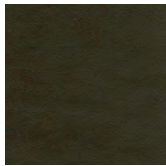


Pencil

LEATHER



Grey Green



Dark Brown



Black

KWADRAT

- Hallingdal
- Steelcut 2
- Steelcut Trio 2